



14 North Road, Cliffe, Rochester, Kent, ME3 7UH

Draft details. GUIDE PRICE £230,000 - £240,000. OFFERED CHAIN FREE. SOUGHT AFTER SEMI RURAL VILLAGE. 3 BEDROOMS. REAR GARDEN. PERFECT FIRST HOME. VIEWING RECOMMENDED.

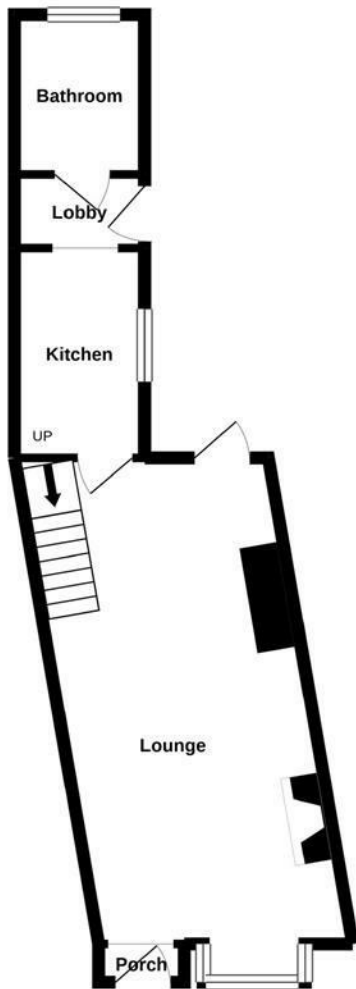
MMS are offering to the market this 3 bedroom terrace house in the semi rural village of Cliffe, that is 10 minutes by car to the road links for commuters and has a bus service to the area. Cliffe offers a primary school, local shop, church and marshland walks with views.

Accommodation comprises of a handy entrance porch, light and airy lounge/diner with a door to the garden, neutral fitted kitchen with cooker, lobby area that offers storage and access to the rear garden and a good size bathroom. On the first floor are the 2 bedrooms with the 3rd being the loft conversion. Benefits to the home include gas central heating, double glazed windows and a good size flat rear garden. The property is offered with no forward chain, please call the office to book your internal viewing.

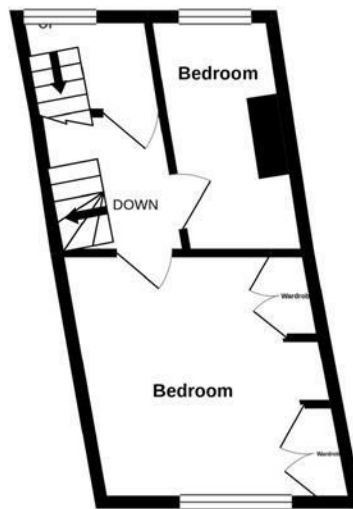
- VIEWING ESSENTIAL
- LOUNGE/DINER
- FITTED KITCHEN
- REAR GARDEN
- 3 BEDROOMS
- ARRANGED OVER 3 FLOORS
- HIGHLY SOUGHT AFTER VILLAGE LOCATION
- PERFECT FIRST HOME
- NO FORWARD CHAIN

£230,000

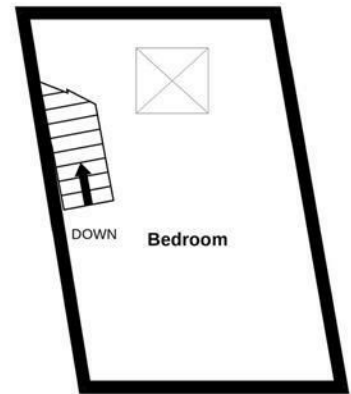
Ground Floor



1st Floor



2nd Floor



Whilst every attempt has been made to ensure the accuracy of the floorplan contained here, measurements of doors, windows, rooms and any other items are approximate and no responsibility is taken for any error, omission or mis-statement. This plan is for illustrative purposes only and should be used as such by any prospective purchaser. The services, systems and appliances shown have not been tested and no guarantee as to their operability or efficiency can be given.
Made with Metropix ©2020

